

Beethoven — Symphony No. 6  
Klarinette I in B

418 *Solo*  
*dolce* *p* *dolce*

432

470 *K*  
*f* *p* *f* *dolce*

482 *f* *f* *f* *dim.*

490 *pp*

56 *2 Viol. II*  
*cresc. p* *p* *2 Viol. I* *cresc. f*

69 *D Solo*  
*p*

74 *cresc.* *p* *tr.*

119 *Ob. I*  
*cresc.*

132 *p*

## IV

## IV Symfonia B-dur

Allegro ma non troppo ( $\text{♩} = 80$ )

LUDWIG van BEETHOVEN

KL. B

*p* *ff* *dim.* *dolce* *ff* *dolce*

## VI Symfonia F-dur „Pastoralna”

Allegro ma non troppo ( $\text{♩} = 66$ )

LUDWIG van BEETHOVEN

KL. B

*ff* *fp* *cresc.* *f* *p dolce*

Shostakovich - Symphony No. 9

II

in A

Moderato  
Solo

28

*p*

7

13

29

20

26

30

*p*

33

2

*p*

40

31

47

A

Shostakovich – Symphony No. 9

III

in A

Presto Solo

49

*p*

5

dimin.

9

50 [A]

*p*

cresc.

13

*f*

17

51

5

52

*f* cresc.

26

*mp*

29

cresc.

[B]

*f*

32

53

*f marc.*

36

54

*f*

41

44

cresc.

*ff*

Mendelssohn — Midsummer Night's Dream

In B.  
Scherzo.  
Allegro vivace.

CLARINETTO I.

Nº 1.

*p*

1 2 1

*dim.*

A 2

*cresc.*

*p* *tr* *tr* *tr* *tr* B

D 5 *p*

E *p* *cresc.*

*f cresc.* *ff* *f* *p* 1 3

F *p* *cresc.* *f cresc.* *ff* *f* *dim.*

1 1 G *p*

Mendelssohn — Midsummer Night's Dream

CLARINETTO I.

5

21 L *p*

M

The image shows a musical score for Clarinet I, measures 21 through 25. The score is written on three staves. The first staff begins with a treble clef and a key signature of one flat (B-flat). It contains measures 21 through 25. Measure 21 is marked with a '2' above the staff, indicating a second ending. Measure 22 is marked with a '1' above the staff, indicating a first ending. Measure 23 is marked with a 'K' above the staff, indicating a key change. Measure 24 is marked with a '21' above the staff, indicating the start of a new section. Measure 25 is marked with an 'L' above the staff, indicating a first ending. The first ending is marked with a 'p' (piano) dynamic. The second staff contains measures 26 through 30. The third staff contains measures 31 through 35. The third staff is marked with an 'M' above the staff, indicating a first ending. The first ending is marked with a 'p' (piano) dynamic.

Peter Ilyich Tchaikovsky  
Symphony No. 6 in B Minor, Op. 74 (Pathétique)

I

Allegro non troppo

48 *p* **B** 3 *Solo* *pp*

55 *pp* *Solo* *p* *Solo* *p* *Solo*

58 1 1 *Solo* *sf* *Solo* *sf* *Solo* *p*

63 **C** *Solo* *p* *mp* *Solo* *mp* *Solo*

66 *Solo* *f* *Un poco animando* *ff*

70 *Un poco più animato*

73 *f*

77 **D** *Andante mf* *p* *p* 3 *rit. molto* 3 *Adagio* 1



Tchaikovsky — Symphony No. 6 in B Minor, Op. 74 (Pathétique)

KLARINETTE I in A

99 *riten.* *mf* *p* *Moderato mosso* 5 (Fl. I) *mp* *f* 1

109 *E* *p* *f* 1

114 *mp* *f* 1 *F* *p* *f* 1

119 *p* *più f* *f* 1

124 *ff* *ff* *riten.* *ff* 12/8

Detailed description: This is a page of a musical score for the first clarinet part of Tchaikovsky's Symphony No. 6. The music is in A major and 3/4 time. It begins at measure 99 with a 'riten.' (ritardando) marking. The first staff (99-108) starts with a half note E4, followed by a quarter rest, then a half note D4, and a quarter rest. This is followed by a 'Moderato mosso' section starting at measure 109. The second staff (109-113) features a series of eighth notes, mostly beamed in pairs, with a 'p' (piano) dynamic. The third staff (114-118) continues with eighth notes, including some triplets, with a 'mp' (mezzo-piano) dynamic. The fourth staff (119-123) features a 'più f' (pianissimo) dynamic, followed by a 'f' (forte) dynamic. The fifth staff (124) ends with a 'ff' (fortissimo) dynamic and a 'riten.' marking. The score includes various musical notations such as slurs, ties, and dynamic markings. The key signature has one sharp (F#) and the time signature is 3/4.



Tchaikovsky — Symphony No. 6 in B Minor, Op. 74 (Pathétique)

KLARINETTE I in A

152 *rall.* 1 *Solo* *Adagio mosso dolce possibile* *ppp* *p* *ppp* *p* *pppp* *ritard. molto*

159 *ppppp* *rag. I*

321 *mf* *animando* *mf* *p* *Triten.* *(con tenerezza)* *Solo* *Meno* *ppp* *p*

327 *ppp* *p* *ppp* *pp* *dolcissimo ma espress.* *rall.* *pp*

332 *pppp* *pp* *pppp* *pp* *quasi adagio* *Andante mosso* *pppp* *pp* *pppp*

# Scherzetto

in A.

II.

Recit. Moderato assai.

tempo *f* Solo. *f* *lento* *p* *acc.* *cresc.* *poco rit.*

in B.

III.

Andantino quasi Allegretto.

19 Solo. *p* *pocchissimo cresc.* *un poco più forte*

in A.

IV

I Solo.

*mf* *pp* *K*

in A.  
Adagio. *poco rit.* (♩ = 50) 1 Solo a tempo

III.

46 *p espressivo e cantabile poco cresc. dim.*

*dim. p poco cresc. p mf cresc.*

*f dim. pp p mf*

*p p poco cresc. dim.*

47 *p dim.*

Dmitri Shostakovich, Op. 10

Symphony No. 1

I

Allegretto  $\text{♩} = 152$   
Solo  
in B $\flat$   
*f*  
1  
dim.  
*p cresc.*  
2  
dim. *p*  
Allegro non troppo  $\text{♩} = 160$   
8  
3  
3  
14 Solo  
 $\text{♩} = 160$   
*p*  
rit.  
a tempo

II

Allegro  $\text{♩} = 192$   
Solo  
in A  
*mf*  
cresc.  
4  
*f*  
7

Shostakovich – *Symphony No. 1*

IV

*Allegro molto* ♩ = 176

in B♭

[6] Solo

*p* *f* *dim.*

[7] 3 [8] *p*

[24] *pp* [25] *pp*

[26] *pp* *sempre cresc.*

[27]

[28] *fff*

[29]

*f* *sf* *più f*

[30] *sf* 3 [31] *f* *cresc.* 2

[32] *fff*

Step  
Poemat symfoniczny

Andante con moto (♩ = 80-88)

ZYGMUNT NOSKOWSKI

KL. B

*mf* *espress.*

3

*mf* *espress.*

4

solo

*p* *molto espress.*

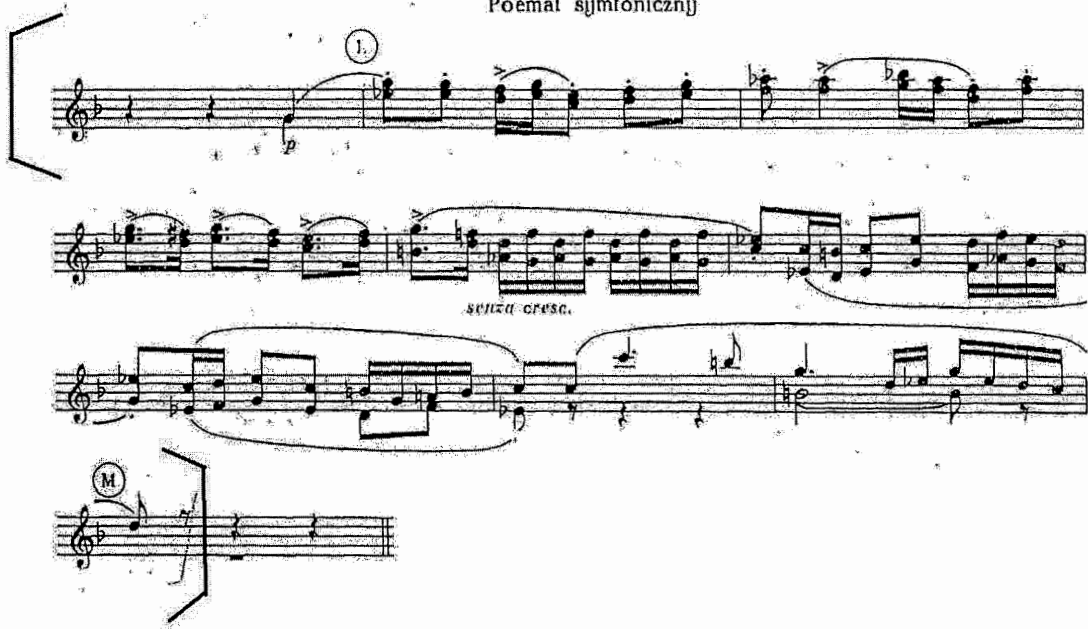
*mf*

II

I

The musical score for Clarinet B is written on a single staff in G-flat major (one flat) and 3/4 time. It begins with a treble clef and a key signature of one flat. The tempo is marked 'Andante con moto' with a metronome indication of 80-88 quarter notes per minute. The score consists of eight measures. Measure 1 starts with a half note G-flat, followed by a quarter note A-flat, and a half note B-flat. Measure 2 contains a half note C, a quarter note D, and a half note E. Measure 3 features a half note F, a quarter note G, and a half note A. Measure 4 has a half note B, a quarter note C, and a half note D. Measure 5 begins with a half note E, followed by a quarter note F, and a half note G. Measure 6 contains a half note A, a quarter note B, and a half note C. Measure 7 has a half note D, a quarter note E, and a half note F. Measure 8 concludes with a half note G, a quarter note A, and a half note B. The score includes various musical notations such as slurs, ties, and dynamic markings. The first measure is marked 'mf' and 'espress.'. The third measure is marked '3'. The fourth measure is marked '4'. The fifth measure is marked 'solo' and 'p molto espress.'. The sixth measure is marked 'mf'. The seventh measure is marked 'II'. The eighth measure is marked 'I'.

Poemat symfoniczny





# Dances of Galánta

Zoltán Kodály

in A

10 Lento  $\text{♩} = 54$  10 poco più mosso 11

*f espr.* *p*

34 *p* *f* poco a poco cresc.

39 *ff*

45 Cadenza *p cresc. poco a poco* *rall.*

46 *f* *p espr.* Andante maestoso  $\text{♩} = 76-80$

51 *poco cresc.*

55

59 [pochiss. sosten.]

62 *dim.* *p*

# Dances of Galanta

565 Andante maestoso  $\text{♩} = 72$  poco rubato

*p espr.* 3 3

573 *cresc.* 6

575 *accel.* 6 *ad lib.* 6

577 *sostenuto* *tr* *tr* *tr* *pp*

The image shows a musical score for a piece titled "Dances of Galanta". The score is written on four staves. The first staff begins at measure 565 with the tempo marking "Andante maestoso" and a quarter note equal to 72 (♩ = 72). The key signature has one flat (B-flat). The first staff contains measures 565 to 572, featuring a melodic line with triplets and a dynamic marking of "p espr.". The second staff starts at measure 573 and includes a "cresc." (crescendo) marking. The third staff starts at measure 575 and includes "accel." (accelerando) and "ad lib." (ad libitum) markings. The fourth staff starts at measure 577 and features trills marked "tr" and a "sostenuto" (sustained) marking, ending with a "pp" (pianissimo) dynamic. The score is enclosed in large square brackets on the left and right sides.